

THE NUGGETEER



April 2025

Vol.5 No.3

A Message from the President Tim's Tidbits

Hello members and prospectors, it's that time of year to be mindful of fast moving water because of the spring runoff. Be safe and happy hunting for the gold.

Tim Pitney
President COSGPAA

Web address: <http://cosgpaa.org>

Facebook address closed <https://www.facebook.com/groups/733783243720768/members/>

Facebook address open <https://www.facebook.com/cosgpaa>

Tonight's precious metals spot prices per Troy ounce

Year	Gold	Silver	Platinum	Palladium	Rhodium
2024	\$2,311.75	\$27.29	\$953.97	\$1,058.00	\$4,350.00
2025	\$3,106.36	\$31.17	\$948.31	\$956.38	\$5,800.00

4/6/2025

1

GPAA

COLORADO SPRINGS CHAPTER

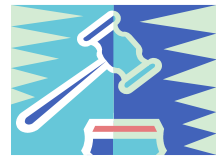


GPAA OFFICERS Colorado Springs Chapter

President	Tim Pitney	
Vice President	Joel Swisher	719-622-8693 joelswisher1@gmail.com
Treasurer	Alton Oakes	719-439-3590 aoakessprint1@earthlink.net
Secretary	Pat Oakes	719-339-0486 patoakes@centurylink.net
Membership Chairperson	Lorraine Sirois	719 391-8545 grainmax@msn.com
Claims Chairman	Alton Oakes	719-439-3590. aoakessprint1@earthlink.net
Nuggeteer Editor	Del Cox	719-591-1282 coxd@mac.com
Outings Chairman	Alton Oakes	719-439-3590. aoakessprint1@earthlink.net
Webmaster	Paul Covington	719-310-7542 Paul@covingtoncomputers.com
Facebook editor	Cindy Swisher	719-661-7542 cslectrn@gmail.com
Hospitality Committee	Position Open	

Renewals, multi-year discounts and life memberships available on-line at www.Goldprospectors.org , or call 800-551-9707 , and Please mention that you want to be part of the COLORADO SPRINGS CHAPTER.

MEETING MINUTES



April 2, 2025, COSGPAA Meeting Minutes

Attendees: 21 in person; 165 by e-mail

The April monthly meeting was called to order at 7:01 pm by Chapter President Tim Pitney and began with the Pledge of Allegiance to the Flag. Tim welcomed new members and guests: John Tutko and Robert Prine. Tim discussed the Colorado wolf release program and recent tracking reports putting them in Teller and Chaffe counties. Although wolves are currently a protected species, they may be killed in self-defense. Tim also reminded us about the dangers of high water from spring storms, snowmelt and controlled reservoir releases for rafting season.

Weather permitting, our first outing will be on the Arkansas River claims at the Railroad Bridge Campground in Buena Vista, CO, May 2-4, 2025. We will also be participating in the Gold Prospectors of Colorado (GPOC) annual *Poker Run & Let's Go Panning* events on Mothers' Day weekend May 10th and 11th. The Poker Run flier is in the April Nuggeteer. Both outings are open to the public and are family friendly.

Tim talked about the recent gold find (assayed at 14 Toz per ton) at the Cripple Creek Gold Mine and how they may need to begin underground mining due to the restrictions on expanding their open pit operations.

MEETING MINUTES



April 2, 2025, COSGPAA Meeting Minutes (continued)

Since the Chapter hasn't conducted a mine tour outing in the past three years, Tim will research current options and report results at the next meeting.

Treasurer Alton Oakes gave the Chapter financial report and gave a presentation on preparing for thunderstorms and emergency communications. He provided two handouts with copies included in this month's Nuggeteer.

After the door prize drawing the meeting was adjourned at 8:59 pm. Thank you again to those who helped with the meeting set up and teardown. Thanks also to Pat Oakes, for providing fudge brownies.

DOOR PRIZE WINNERS March 5, 2024

Gold: Winners, Daryl Barnett, John Mischler, Daryl Barnett, John Tutko, Tim Pitney, Jon Ray

Silver: Winners, John Baumchen, John Mays, Teresa Bailey, Daryl Barnett, Tom Braidwood, Tom Braidwood, Steve Sprague, Richard Logue, Jon Ray, John Baumchen.

Name tag winner: Tim Pitney.

Special drawing: Jon Ray

GPAA

COLORADO SPRINGS CHAPTER

COLORADO SPRINGS GPAA CHAPTER MEETINGS

Meetings are held on the First Wednesday of each month

From 7:00 PM - 9:00 PM at:

The Salvation Army building:

208 Cunningham Drive

Security, CO 80911

All General Meetings are the 1st Wednesday of each month from 7pm to 9:00pm

MEETING DATES

May 7 2025

June 4 2025

July 2 2025

August 6 2025

September 3 2025

October 1 2025

November 5 2025

December 3 2025

The Nuggeteer is published monthly following the regularly scheduled chapter meetings. It will be distributed by email and posted to the Chapter web site. To be added to or removed from our email list, please send your request to cosgpaahospitalitycommittee@gmail.com. To add an article please submit it to the editor at cosgpaahospitalitycommittee@gmail.com.



www.PublicLandsforthePeople.org

PLP's Annual Grand Raffle!!

ORDER YOUR RAFFLE TICKETS TODAY, SUPPORT PLP, AND BE ELIGIBLE TO WIN ONE (OR MORE!) OF THE PRIZES BELOW! **MORE PRIZES WILL BE ADDED.**

**NEW
RAFFLE!!!**

2025 FUNDRAISING RAFFLE

Drawing to be held Oct. 11th, 2025

20 Acre placer claim donated by Mac	cerberusminingsolutions@gmail.com	\$7,000
- 35 Silver 1 Oz Rounds, 35 prizes!	www.publiclandsforthepeople.org	\$35 each
- 1/4"x24"x48" Rock Harness...	www.MoveitCableSystems.com	\$85
- Lifetime PLP Membership	www.publiclandsforthepeople.org	\$1,500
- Minelab Xterra Metal Detector	www.usa.minelab.com	\$300
- (2 prizes) 1 Year Membership to	www.ReinkeGoldMining.com	\$160 Each
- Paid admission for 2 to the next FallFest		\$150
- Garrett AXIOM Pulse Gold Detector	www.garrett.com	\$4,000
- Thompson II Puffer Drywasher manuf. by Mad Mining		\$1,399
- PLP Golden Paydirt Bag		\$200
- Roaring Camp 4 days/ 3 nights donated by	www.roaringcampgold.com	\$450
- Gold Cube 4-Stack donated by	www.goldcube.com	\$ 480
- 1 Week Alaska Mining donated by	www.SkookumGoldCamp.com	\$2,500
- 1 Yr MineOperator Pure Au Membership...	www.youtube.com/@mineoperator	\$120

HURRY! Don't miss out on our **2025 RAFFLE**, which includes several great prizes -- mining equipment, metal detectors, precious metals, a mining claim & MORE!

3 WAYS TO ORDER:

1. Phone: (844) 757-1990 Toll Free
or (844) PLP-1990

Leave a message and we will call you back.

Last day to order by phone is Oct. 9, 2025

2. Buy Tickets in Person at Quartzite Gold Show
and at PLP's Fallfest 2025

Just \$10
for a Book of
12 Tickets!
HURRY!
Drawing Oct. 11th!

Arrastra Near Buenavista, CO



A Rare Arrastra Near Buena Vista, Colorado

JULY 1, 2013

By Kenneth Jessen

In its simplest terms, an arrastra is a grinder and dates back thousands of years. The grinding surface is typically flat bedrock situated near a stream. A vertical pocket is drilled into the rock, and a perpendicular pole is placed in the pocket. Attached to the pole near its base is a horizontal beam and attached to the beam, usually by chains, is a heavy stone that does the grinding. Farther up the pole is a long horizontal beam that is used to turn the arrastra. As the pole is rotated, ore is placed in the path of the stone and the ore is crushed against the bedrock. Eventually, this process creates a groove in the bedrock that is telltale evidence that an arrastra once existed.

The most common use in Colorado was to grind ore containing gold flakes. The ore was placed on the grinding surface, and after many hours the ore was pulverized into a powder. A small amount of mercury was added during the process to amalgamate the gold. The gold-mercury amalgam settled to the bedrock while the worthless rock was flushed away using water from the nearby stream. The amalgam was then collected and strained through a cloth to remove most of the mercury, leaving behind a gold button. The remaining mercury was driven off in a retort, condensed and reused. The gold required further refining to remove the remaining impurities.

Arrastras were used in the absence of large, efficient gold mills or in remote locations. They were very limited in the amount of material that could be processed.

Arrastras in Colorado are rare. Many have been cut out of the bedrock and moved to museums. One example that is still in its original location is relatively easy to reach. It is north of Buena Vista on Fourmile Creek. It requires only a short walk from a U.S. Forest Service road.

To reach this arrastra, follow Colorado Avenue north from downtown Buena Vista. The road crosses the Arkansas River and becomes CR371. Within site of the first Colorado Midland Railroad tunnel, CR375 heads east and uphill. After a mile, CR376 drops down to Fourmile Creek. This road is prone to washouts and it quite sandy – it may require four-wheel drive. After crossing the creek, there is a small parking area on the right. By stepping over a fence (not posted) and walking west, there is a wide gravel wash. The wash leads to the arrastra located at the edge of the trees at a distance of about 400 feet.

Brenda Bosse | Brenda Bosse

9 Bassick Place Westcliffe, Co

<https://www.brendabosse.com/featured.htm>

719-371-3270

example@email.com



This is the first tunnel heading toward the Railroad Bridge. I think that this picture shows the face that Tim talked about at the meeting on the right side.



Elephant Rock marks the entry of BLM's crowded Elephant Rock Campground alongside the river.

Prospecting in the wilderness – Be Prepared.

Don't go out in the woods (or desert) without a backup plan. Leave a written copy of your travel plan and time schedule with someone and let them know when you return.

Carry your phone and a backup battery.

If you are injured or need help, call 911.

Can't get a signal? Be aware that if your cell phone is out of range of a cell tower the battery will drain down quickly because your phone tries to keep pinging for a tower. And that uses up a lot of battery power

Put your cell phone in airplane mode, which will shut down the RF transmitter in your phone. Then write a text message which you'll set up to send to as many responsible people you know in your contact list. Be sure to note the date, time and location as best you can and ask them to call 9-1-1 immediately with this information.

"The rescue message should include, if hiking, the trailhead where you started from (especially if your vehicle is parked there. This helps the Search and Rescue deputy validate the message. It also lets them know the subject didn't find their way out and drive home without notifying anyone. Yes, it happens more often than you would think, especially if alcohol is involved.

Next, download a map of the area you plan to explore onto your phone in advance. If lost the GPS on your phone will show your location on the map. This will allow you either to navigate to a higher location to obtain a cell signal or better describe your location if coordinates are not available or accurate.

Also, keeping the phone against your body or other heat source in cold weather will help preserve the battery. I have sucked the life out of my phone battery more than once snowmobiling."

Now, take your phone out of airplane mode and your phone will try to grab a tower to send the text message. Try to get as high as safely possible (don't climb a tall tree and get injured) and wave your phone around a bit. If it does grab a tower for even a few seconds that's all it needs to send your message.

Shut off your cell phone to conserve the battery

Consider a backup battery with a solar panel and crank handle charger that will extend your phone power indefinitely.

Here is an option, the Scorpion II from Etón, available at Amazon. It has a solar panel, crank charger, AM/FM/Weather Radio, Siren, and flashlight. Whatever battery system you pick, make sure you have the necessary cable to connect to your phone.

Follow first responder orders and don't wander off...

- Once you do make contact with first responders, advise them of your situation as clearly as possible, then follow their directions. Don't try to be a hero at this point – that's their job. And unless there's a really good reason to keep moving (like a forest fire or a flood) stay where you were when you made contact. Don't make your rescuers go looking for you all over the wilderness after you've told them your location. So stay put!

DON'T GET CAUGHT OUTSIDE

No place outside is safe when a thunderstorm is in the area. Get inside as soon as you hear thunder. Run to a substantial building or hard-topped metal vehicle as fast as you can. If you can't get to a safe building or vehicle:

- ✓ Avoid open areas. Don't be the tallest object in the area.
- ✓ Stay away from isolated tall trees, towers or utility poles. Lightning tends to strike the taller objects in an area.
- ✓ Stay away from metal conductors such as wires or fences. Metal does not attract lightning, but lightning can travel long distances through it.
- ✓ If you are with a group of people, spread out. While this actually increases the chance that someone might get struck, it tends to prevent multiple casualties, and increases the chances that someone could help if a person is struck.

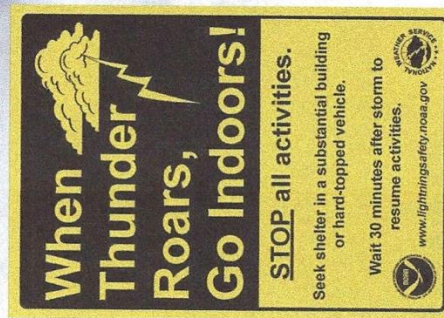
IF SOMEONE IS STRUCK

Cardiac arrest is the immediate cause of death for those who die. Lightning victims do not carry an electrical charge and may need first aid immediately.

- ✓ Call for help. Call 9-1-1.
- ✓ Give first aid. Begin CPR if you are trained.
- ✓ Use an Automatic External Defibrillator if one is available. These units are lifesavers!
- ✓ Don't be a victim. If possible, move the victim to a safer place. Lightning CAN strike twice.

ORGANIZED OUTDOOR ACTIVITIES

It's essential that people in charge of organized outdoor activities understand the dangers of lightning and have a lightning safety plan. Don't be afraid to ask. If you hear thunder, it's time to get to a safe building or vehicle. Speak out!



LIGHTNING SAFETY

FOR YOU AND
YOUR FAMILY



LEARN MORE ABOUT
LIGHTNING SAFETY AT:

www.weather.gov/lightning

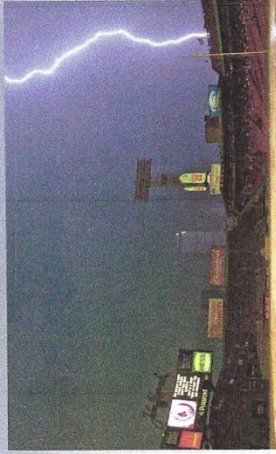
WHEN THUNDER ROARS, GO INDOORS!

Each year in the United States, there are about 25 million cloud-to-ground lightning flashes and about 300 people struck by lightning. Of those struck, about 30 people are killed and others suffer lifelong disabilities. Most of these tragedies can be prevented. When thunderstorms threaten, get inside a building with plumbing and electricity, or a hard-topped metal vehicle!

The National Weather Service collects information on weather-related deaths to learn how to prevent these tragedies. Many lightning victims say they were "caught" outside in the storm and couldn't get to a safe place. Other victims simply waited too long before seeking shelter. With proper planning, similar tragedies can be avoided.

Some people were struck because they went back outside too soon. Stay inside a safe building or vehicle for at least 30 minutes after you hear the last thunder. While 30 minutes may seem like a long time, it is necessary to be safe.

Finally, some victims were struck inside homes or buildings while they were using electrical equipment or corded phones. Others were in contact with plumbing, outside doors, or window frames. Avoid contact with these electrical conductors when a thunderstorm is nearby!



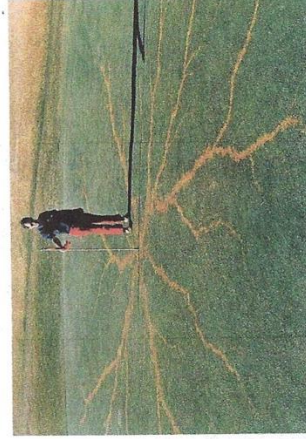
Stadiums and other outdoor venues should have a lightning safety plan. Photo: NOAA

WHAT YOU MIGHT NOT KNOW ABOUT LIGHTNING

- ✓ All thunderstorms produce lightning and are dangerous. Fortunately, people can be safe if they follow some simple guidelines when thunderstorms are forecast.
- ✓ Lightning often strikes outside the area of heavy rain and may strike as far as 10 miles from any rainfall. Many lightning deaths occur ahead of storms before any rain arrives or after storms have seemingly passed and the rain has ended.
- ✓ If you can hear thunder, you are in danger. Don't be fooled by blue skies. If you hear thunder, lightning is close enough to pose an immediate threat.
- ✓ Lightning leaves many victims with permanent disabilities. While only about 10% of lightning victims die, many survivors must live the rest of their lives with intense pain, neurological disabilities, depression, and other health problems.

AVOID THE LIGHTNING THREAT

- ✓ Have a lightning safety plan. Know where you'll go for safety and ensure you'll have enough time to get there.
- ✓ Postpone activities. Consider postponing activities if thunderstorms are forecast.
- ✓ Monitor the weather. Once outside, look for signs of a developing or approaching thunderstorm such as towering clouds, darkening skies, or flashes of lightning.
- ✓ Get to a safe place. If you hear thunder, even a distant rumble, seek safety immediately. Fully enclosed buildings with wiring and plumbing are best. A hard-topped metal vehicle with the windows closed is also safe. Stay inside until 30 minutes after the last rumble of thunder. Sheds, picnic shelters, tents or covered porches do NOT protect you from lightning.
- ✓ If you hear thunder, don't use a corded phone except in an emergency. Cordless phones and cell phones are safe to use.
- ✓ Keep away from electrical equipment and plumbing. Lightning will travel through the wiring and plumbing if your building is struck. Don't take a bath or shower, or wash dishes during a storm.



Lightning discharge on a golf green. Photo: E. Philip Krider

For more information, visit www.weather.gov/lightning



Gold Prospectors of Colorado

5th Annual Poker Run / Fund Raiser

Who: Gold Prospectors of Colorado (GPOC) A local non-profit club that teaches about Colorado gold history, prospecting, gold panning, and other fun and interesting things in the great Colorado outdoors.

When: Saturday, May 10th (Mother's Day Weekend) Registration **9:00AM – 12:00PM**

Where: River Front Park, Florence, CO will be the registration and starting point. Five stops along the Arkansas river with the final point at the GPOC claim near Salida, CO.

Cost: \$10/score sheet. No limit to how many cards can be purchased. The more the better chance of winning. Prizes for the best scores at the final point.

Why: Why not ?!? Turn off the TV and electronics off and get outdoors! Learn some local history, learn something new and just enjoy a day in the great Colorado outdoors on the Arkansas River.



Check points:

- #1 - Starting Point: River Front Park, Florence CO. New member sign-up, Poker run registration (\$10 per score sheet), and draw first two cards per score sheet.
- #2 - AHRA Parkdale Recreation Site. Draw one card per score sheet.
- #3 - AHRA Pinnacle Rock. Draw one card per score sheet.
- #4 - Vallie Bridge Camp Ground. Draw one card per score sheet.
- #5 - GPOC Woody's Claim. Ending Point and draw two cards per score sheet. Prizes for best scoring sheets!

(For more info go to: <https://gpoc.club>)



Colorado Springs Chapter Links

Gold Prospectors of Colorado

<https://gpoc.club>

[\(20+\) Gold Prospectors of Colorado | Groups | Facebook](#)

•American Legion Post 38

•6685 Southmoor Dr,
Fountain, CO 80817

The Rock Doc

17897 US Hwy. 285
Nathrop, Colorado 81236

(between Buena Vista & Salida, 5 miles south of Nathrop)

<http://www.therockdoc.net>

Public Lands for the People

<https://www.publiclandsforthepeople.org>

•Public Lands For The People

•PO Box 1660

•Inyokern, CA 93527

•1-844-757-1990